

# TTC Subway Rider Efficiency Guide large print



1.2paobwds  
2005/07/14

[www.ttcriders.ca](http://www.ttcriders.ca)



escalator up  
(going your way) → ↗

↖ ← stairs

escalator up  
(not going your way) → ↘

↑↓↑ ← elevator

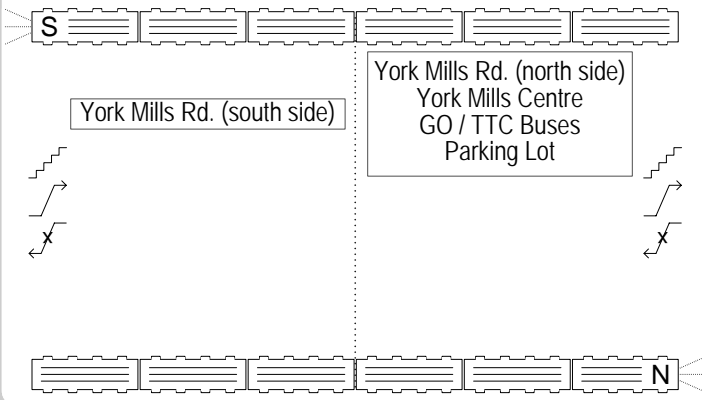
escalator down  
(going your way) → ↙

↗ ← escalator up  
or down  
(time of day)

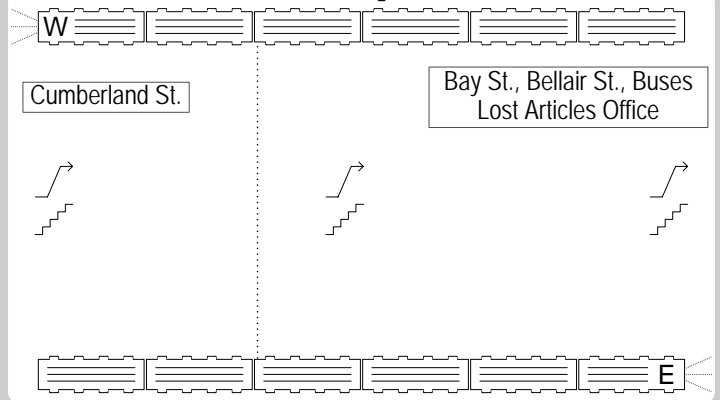
escalator down  
(not going your way) → ↕

tip: in most stations, the DWA (designated waiting area) lines up near the first door of the fifth car

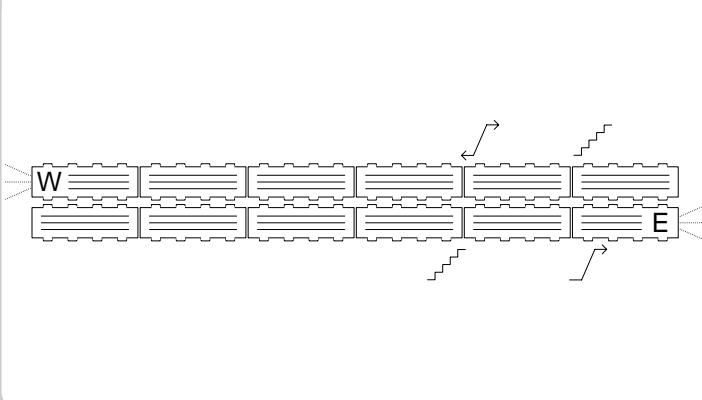
## York Mills



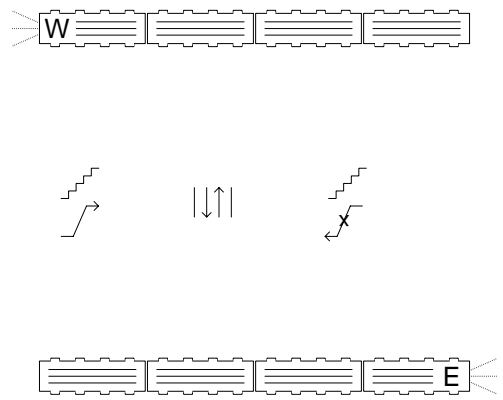
## Bay



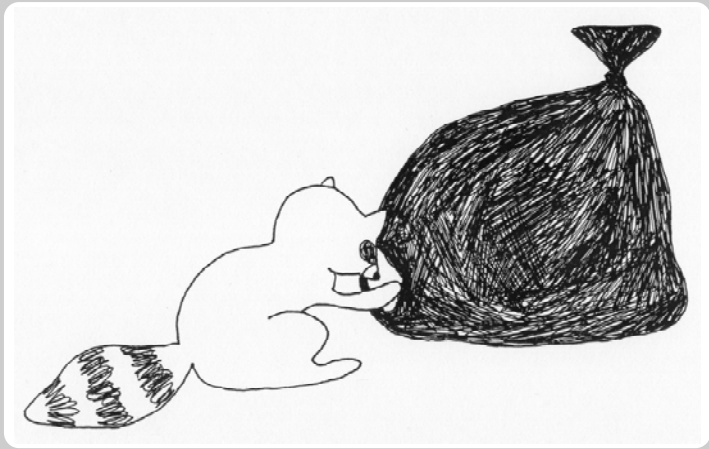
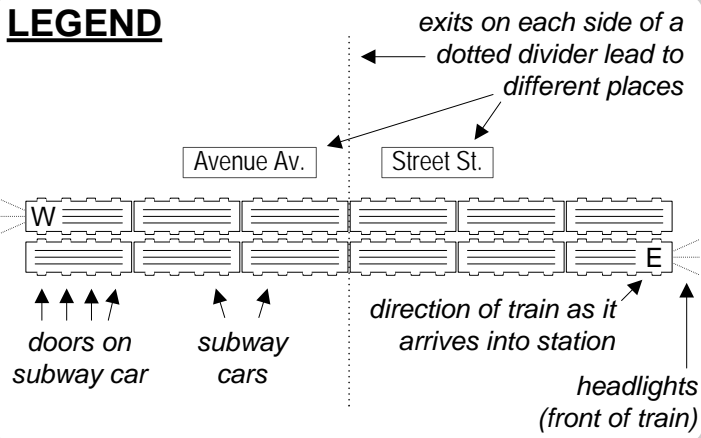
## Woodbine



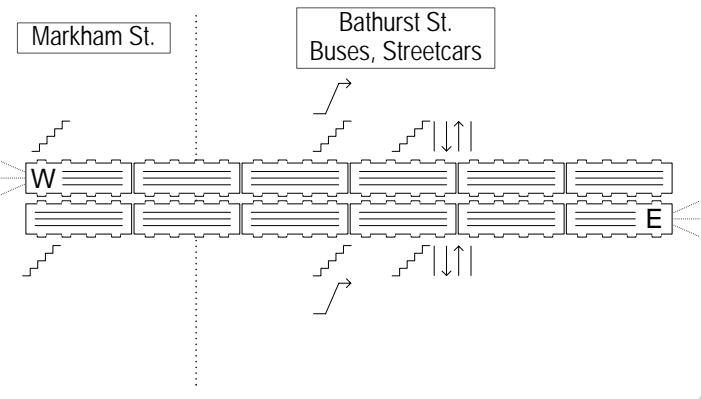
## Bessarion



# LEGEND



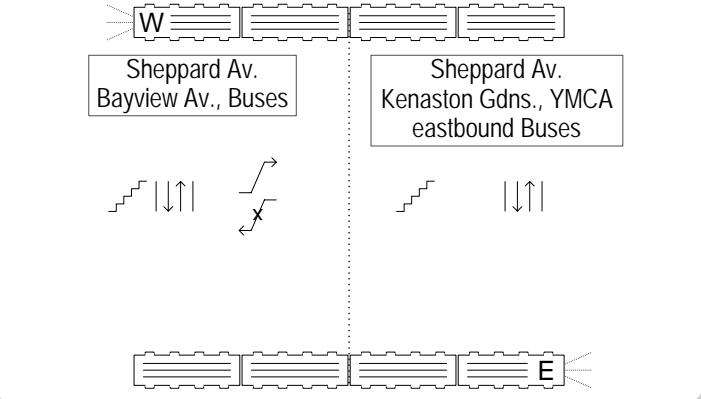
## Bathurst



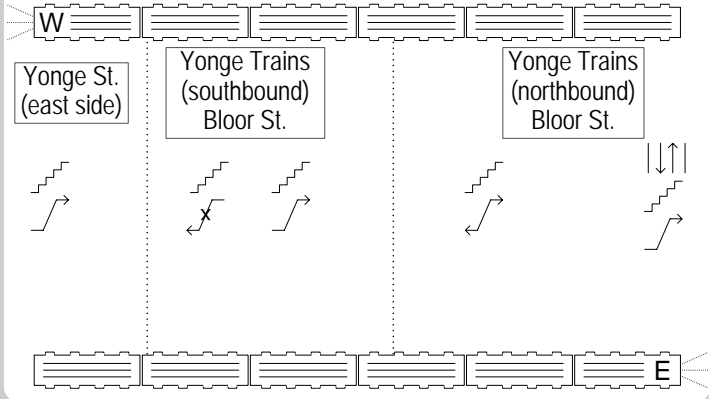
## Yorkdale



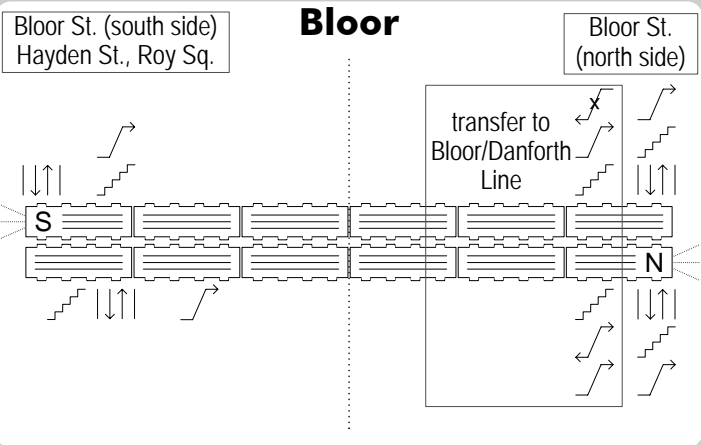
## Bayview



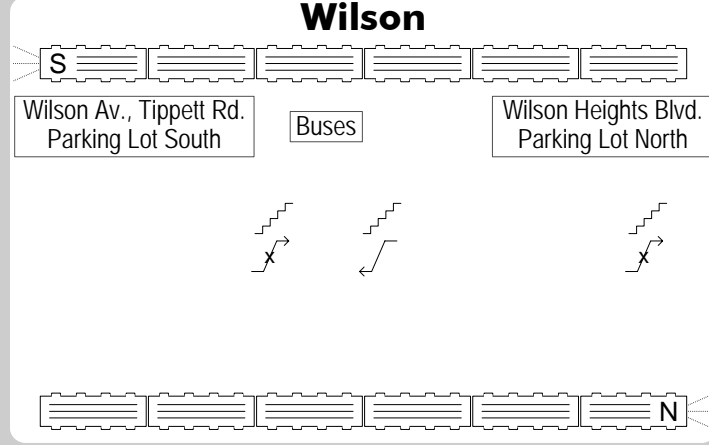
## Yonge



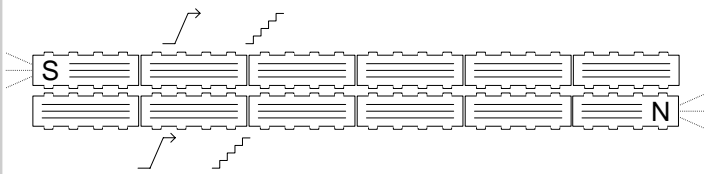
## Bloor



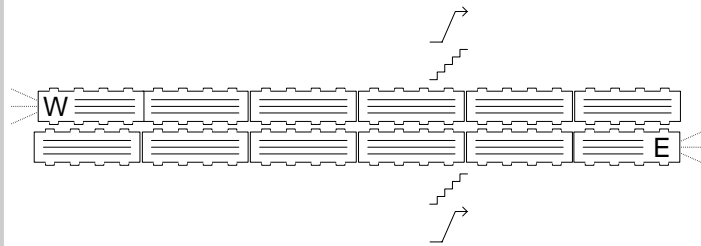
## Wilson



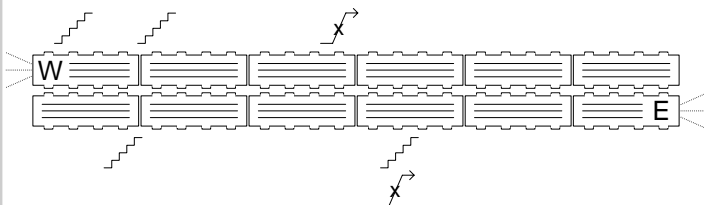
### Wellesley



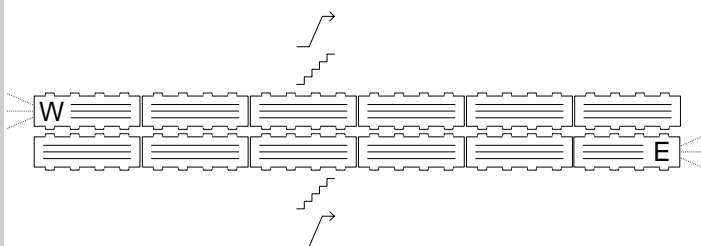
### Broadview



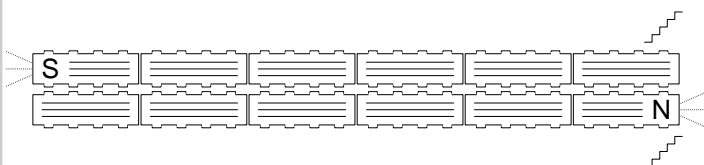
### Victoria Park



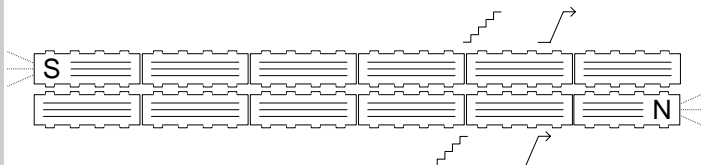
### Chester



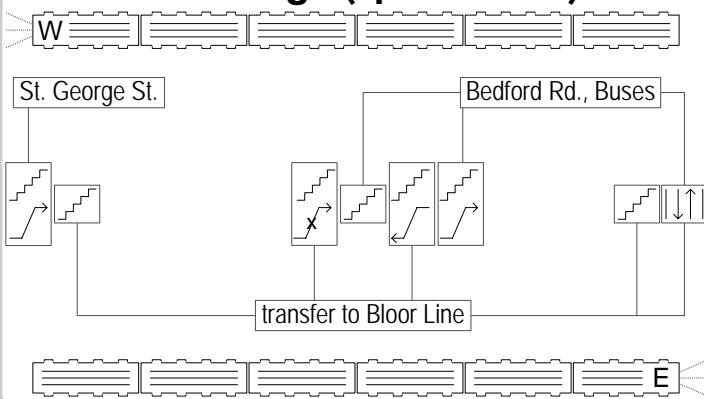
### Summerhill



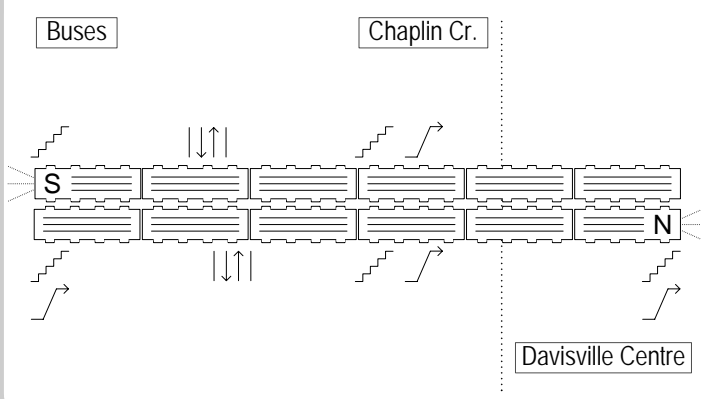
### College



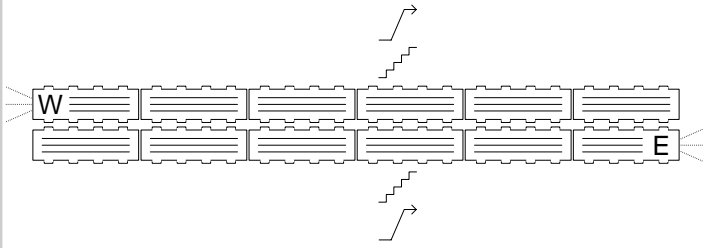
### St. George (Spadina Line)



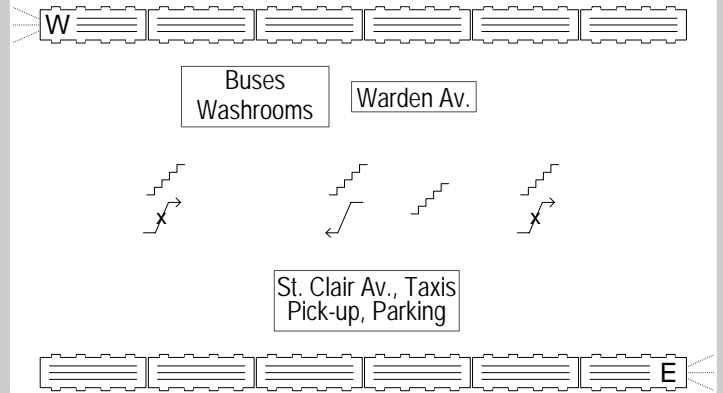
### Davisville



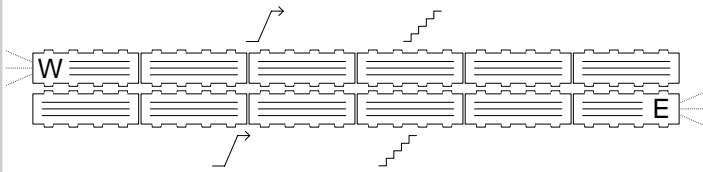
## Castle Frank



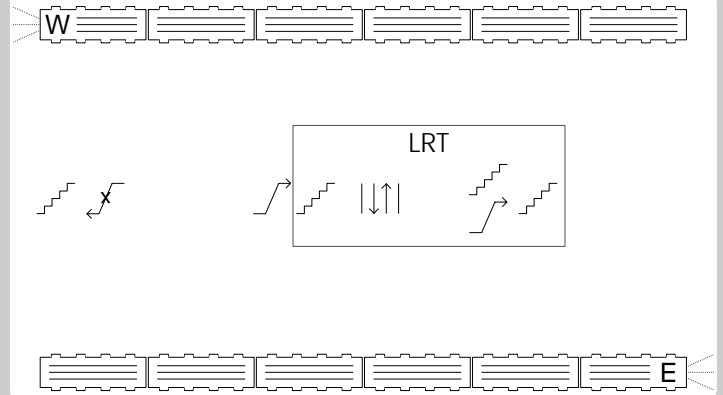
## Warden



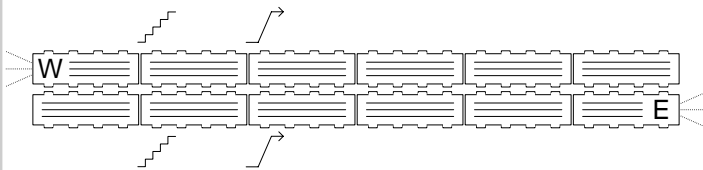
## Christie



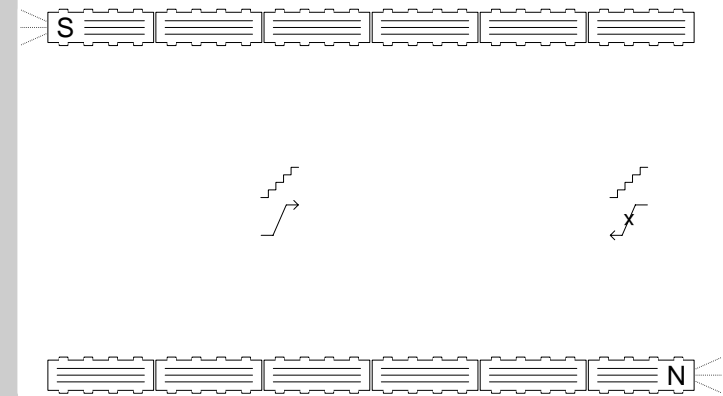
## Union



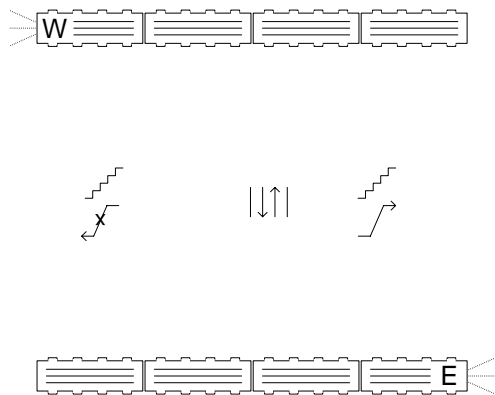
## Coxwell



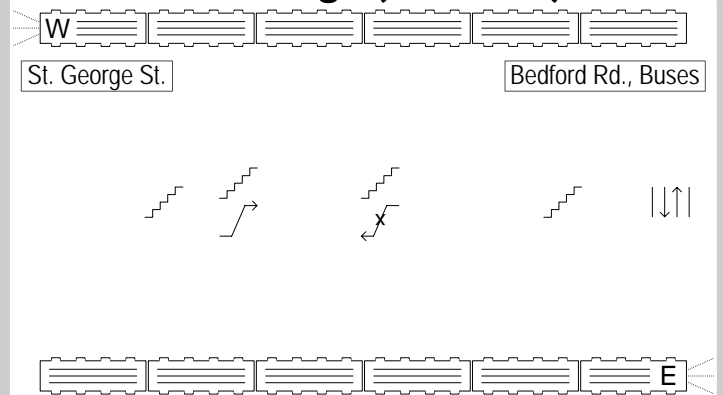
## St. Patrick



## Don Mills



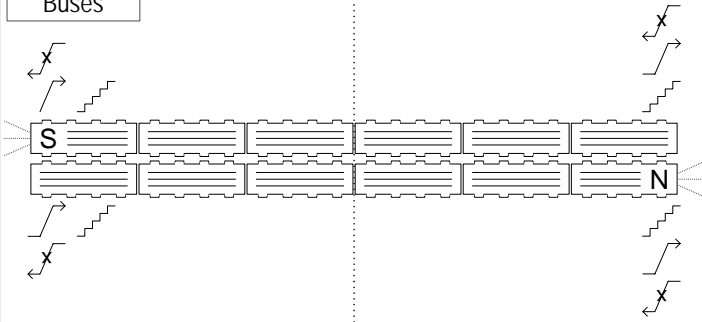
## St. George (Bloor Line)



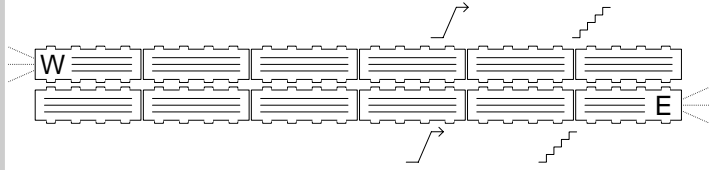
St. Clair Av.  
Streetcars  
Buses

### St. Clair West

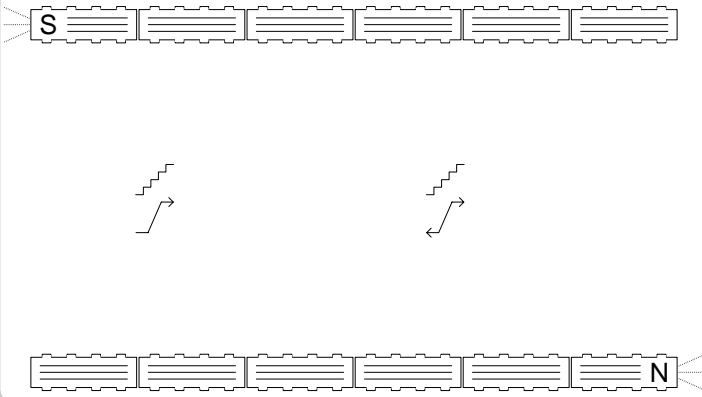
Heath St.



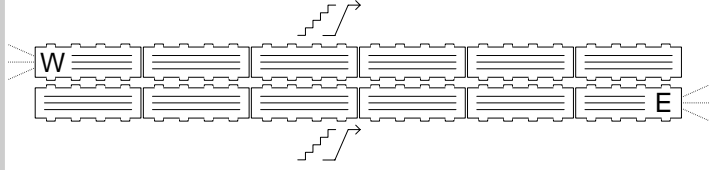
### Donlands



### St. Andrew



### Dufferin

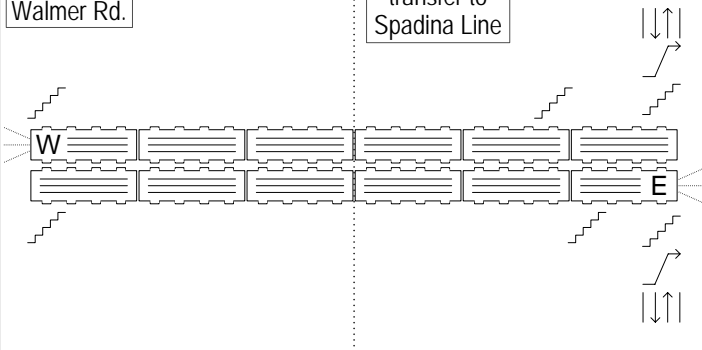


### Spadina (Bloor Line)

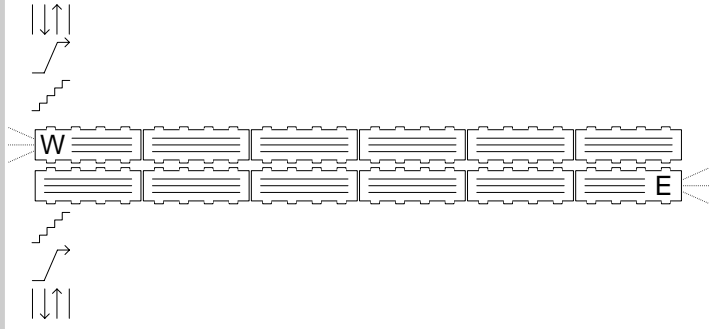
Walmer Rd.

transfer to  
Spadina Line

Buses, Streetcar  
Spadina Av.



### Dundas West

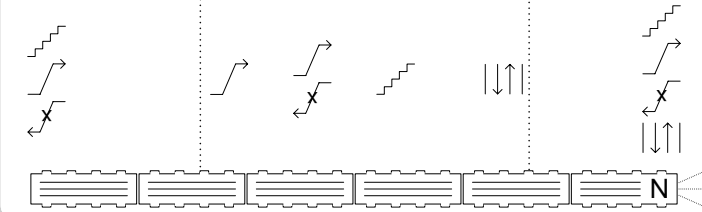


### Sheppard-Yonge (Yonge Line)

Poyntz Av.  
Yonge St.  
(s. of Sheppard)

transfer to Sheppard Line

Buses  
Sheppard Centre  
Sheppard Av.  
Yonge St.  
(n. of Sheppard)



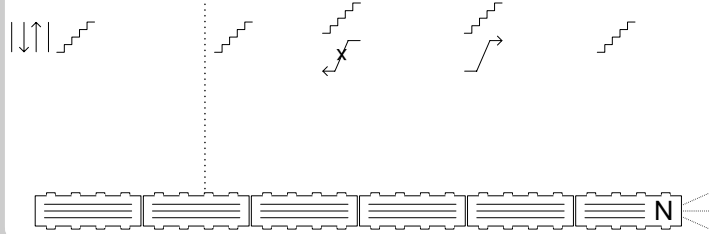
### Eglinton

Yonge St.  
(south of Eglinton)

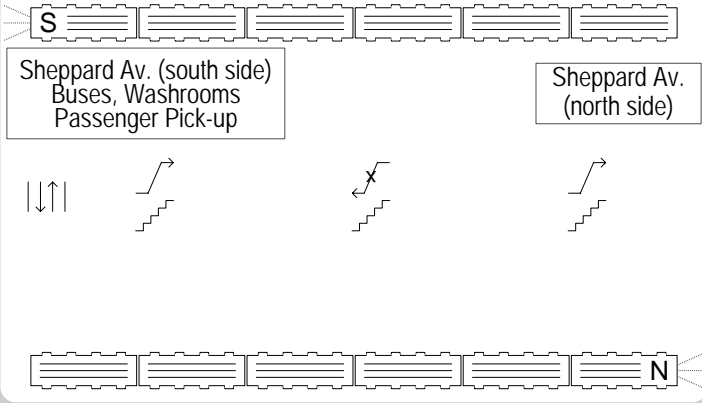
Washrooms

Buses

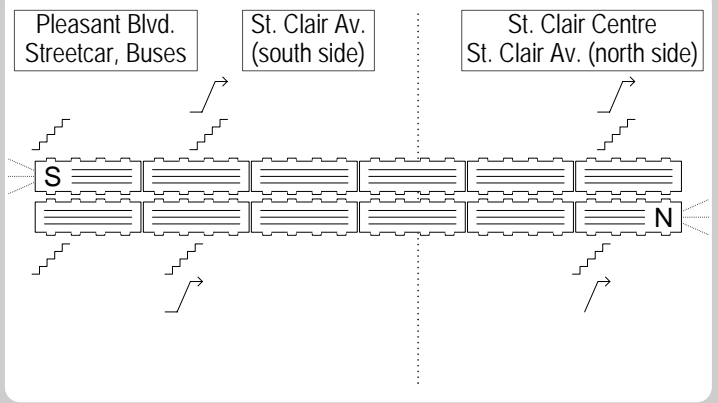
Eglinton Av.  
(north side)



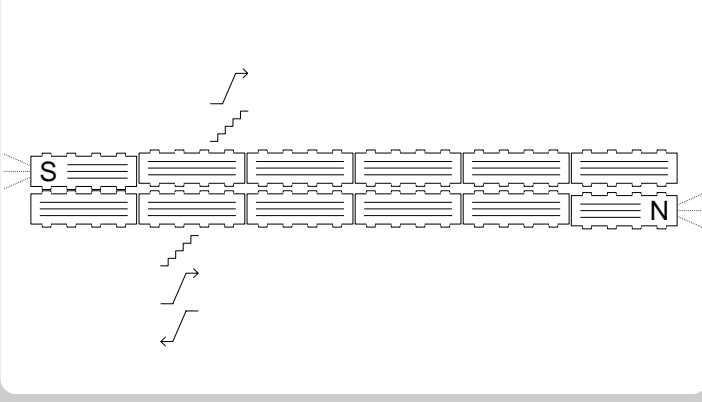
### Downsview



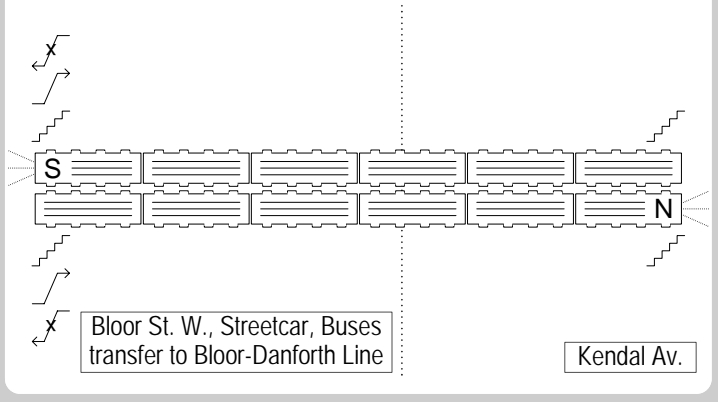
### St. Clair



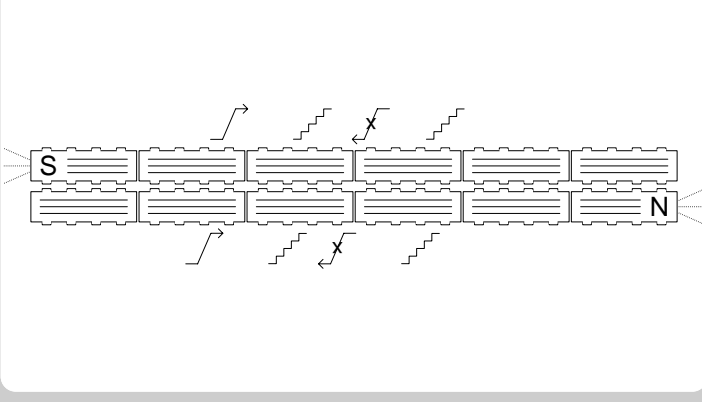
### Dundas



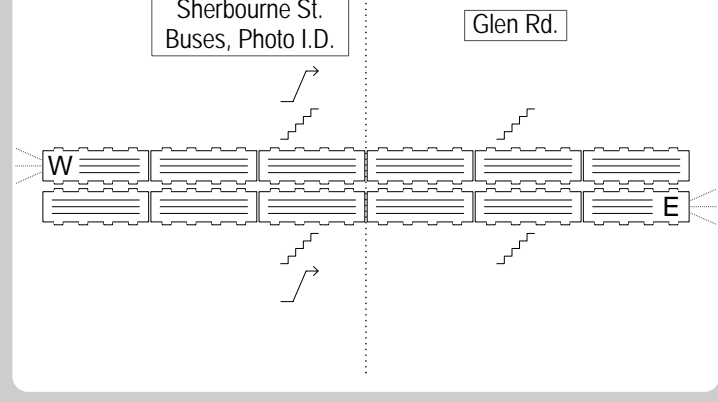
### Spadina (Spadina Line)



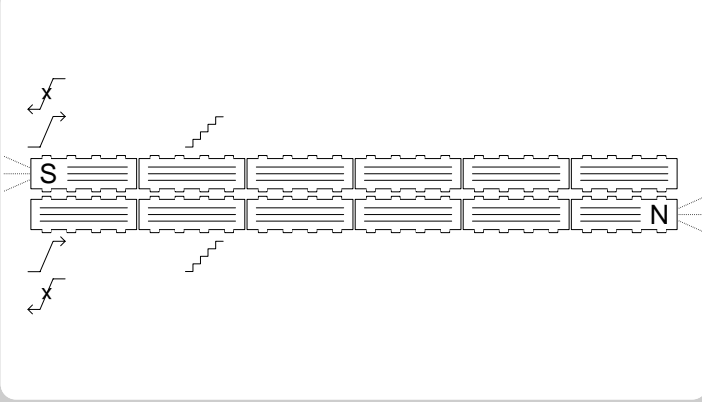
### Dupont



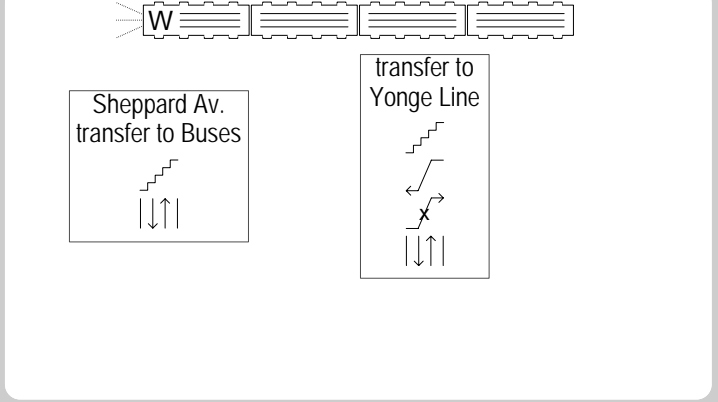
### Sherbourne



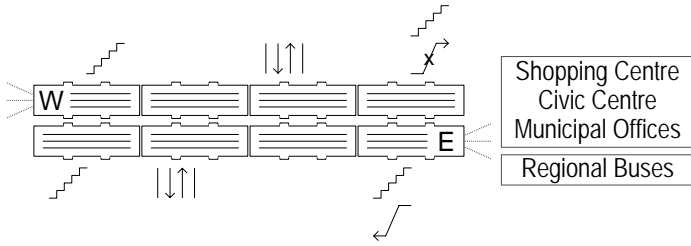
### Eglinton West



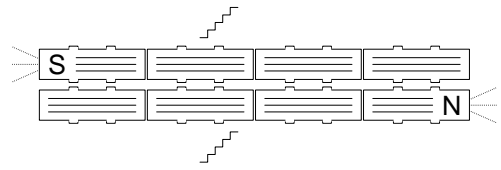
### Sheppard-Yonge (Sheppard Line)



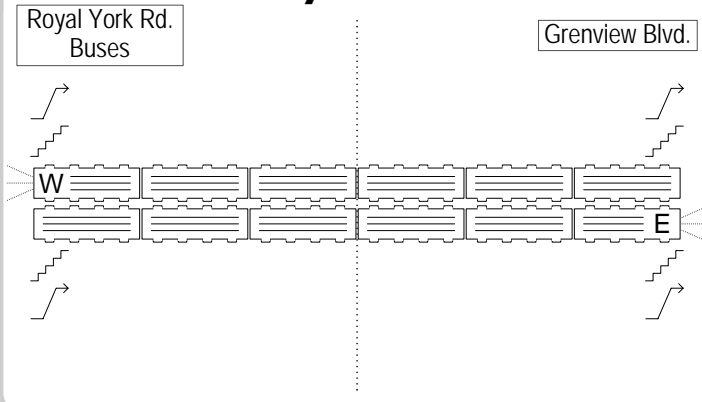
## Scarborough Centre



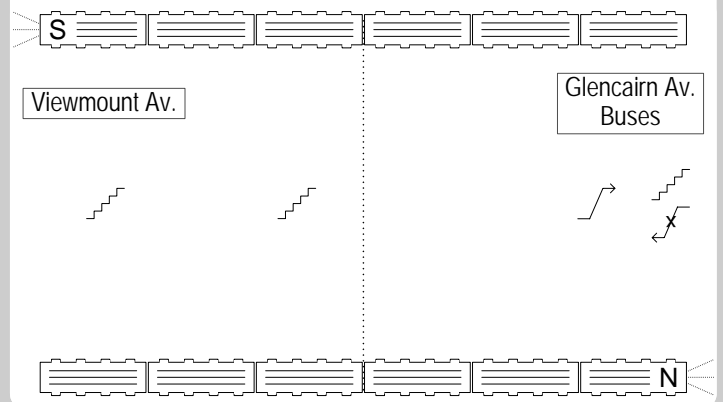
## Ellesmere



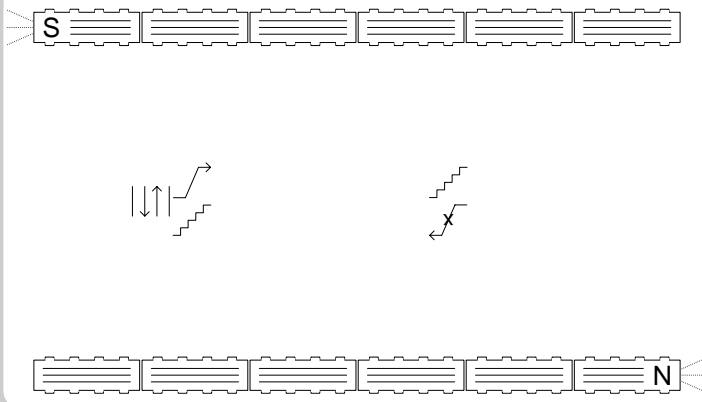
## Royal York



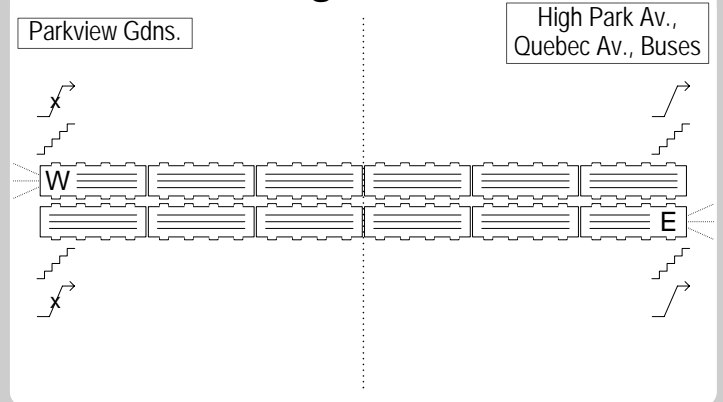
## Glencairn



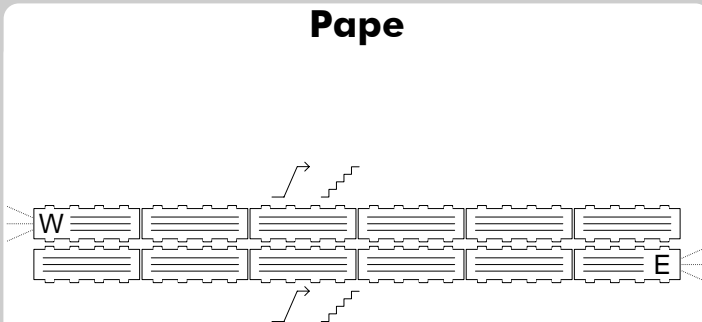
## Queen's Park



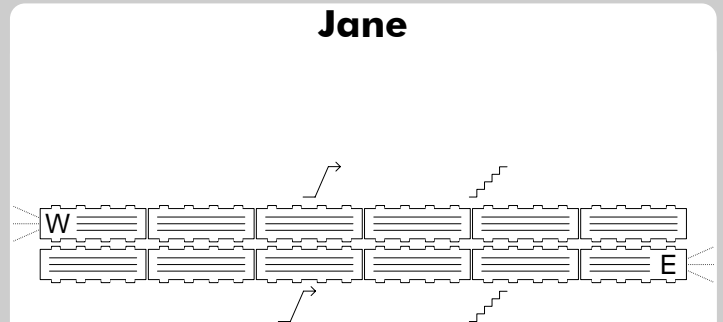
## High Park



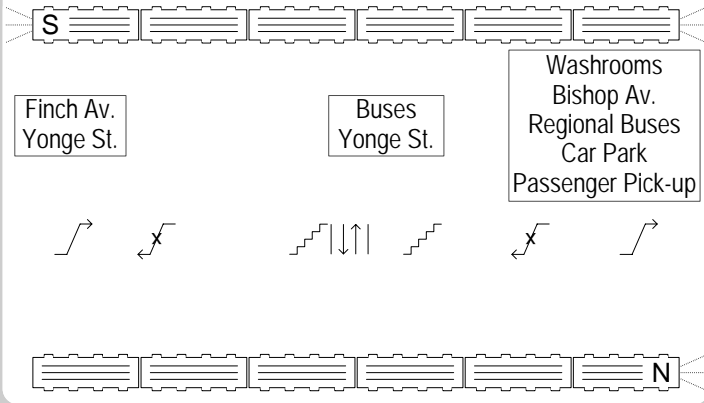
## Pape



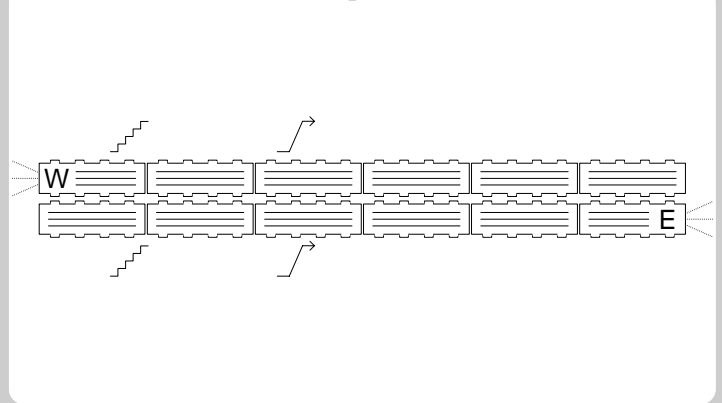
## Jane



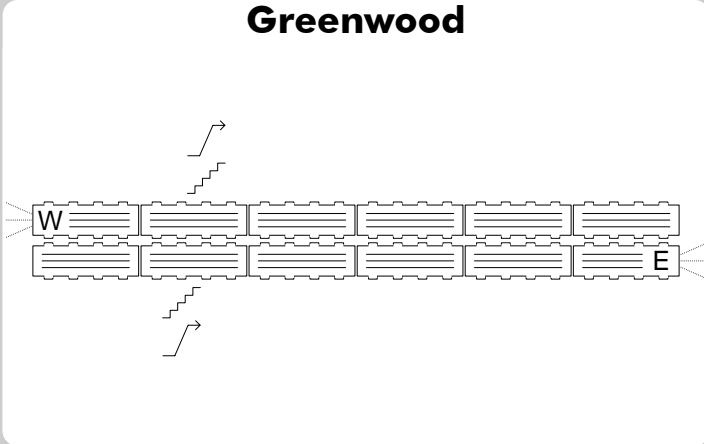
## Finch



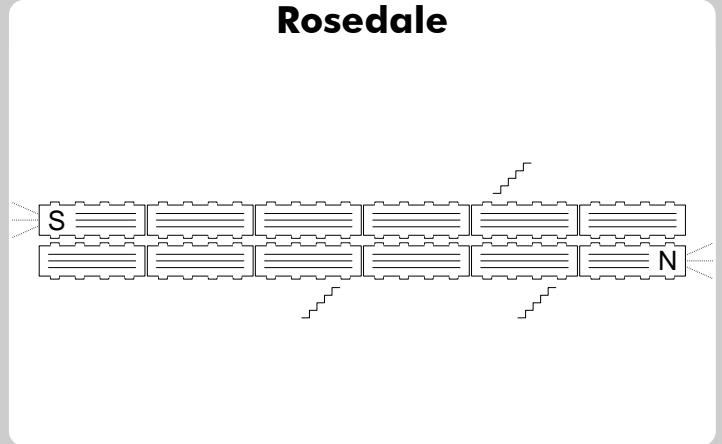
## Runnymede



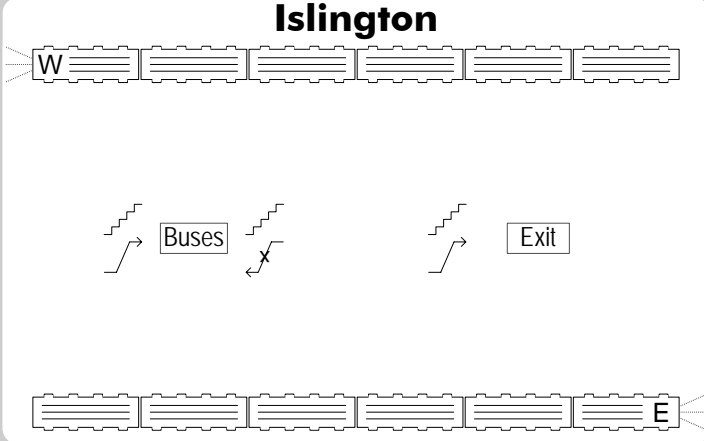
## Greenwood



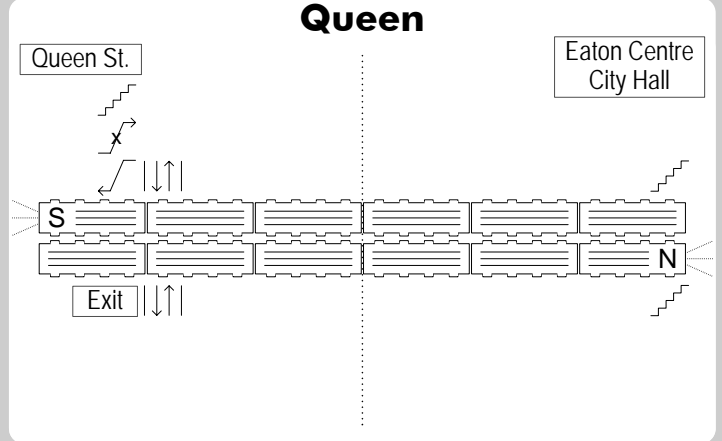
## Rosedale



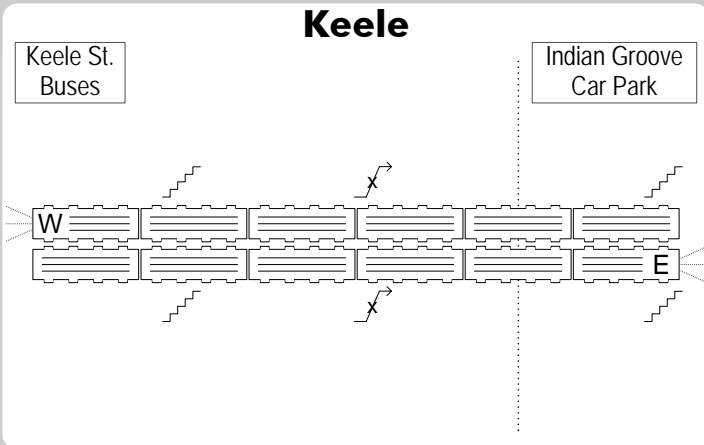
## Islington



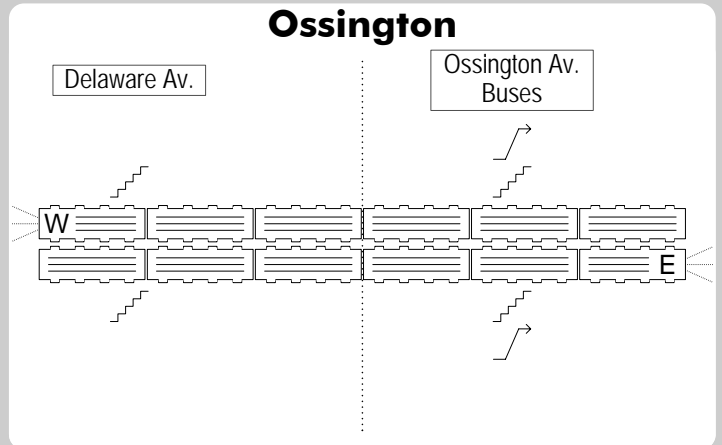
## Queen



## Keele

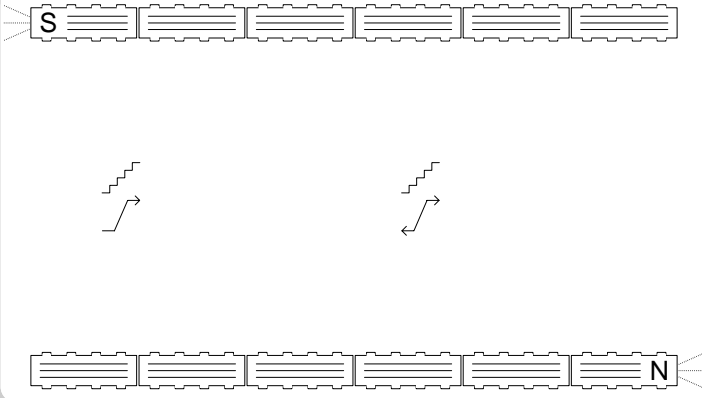


## Ossington

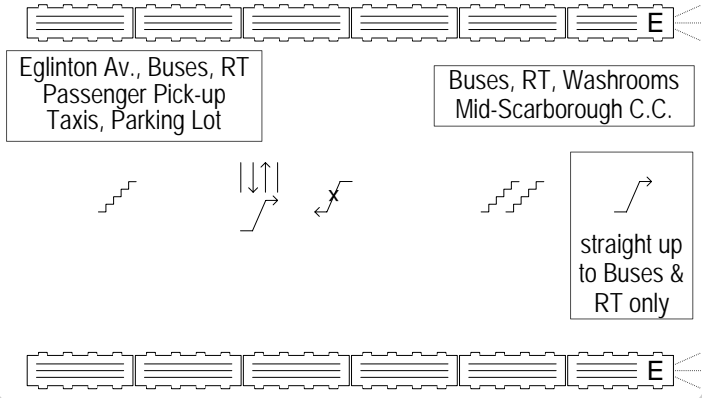




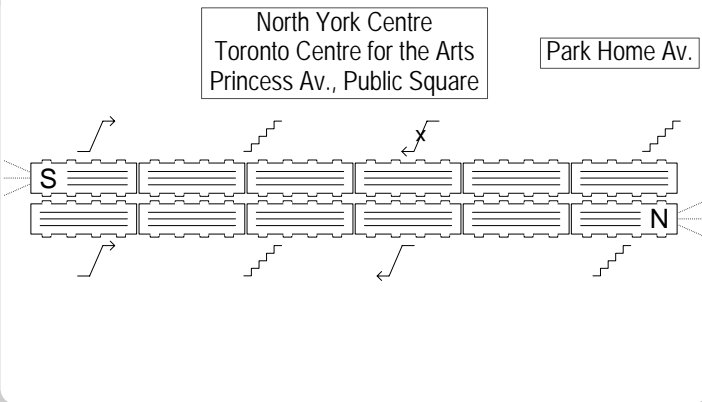
### Osgoode



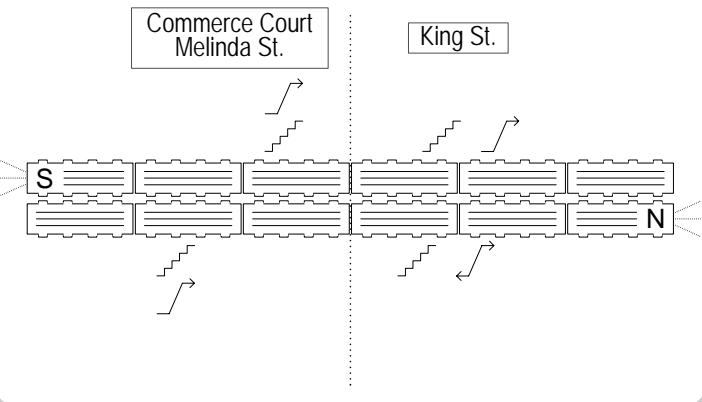
### Kennedy (Subway)



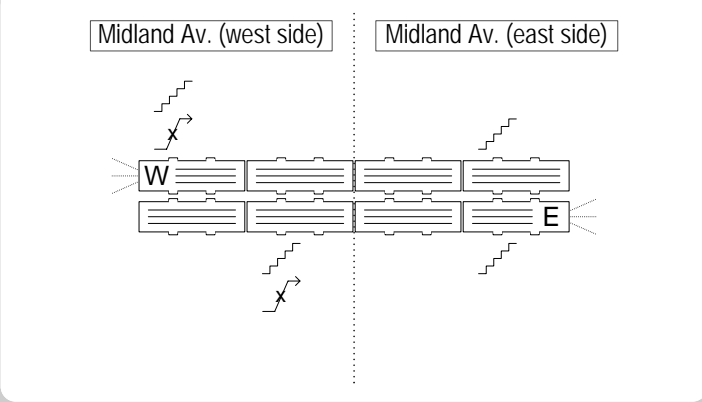
### North York Centre



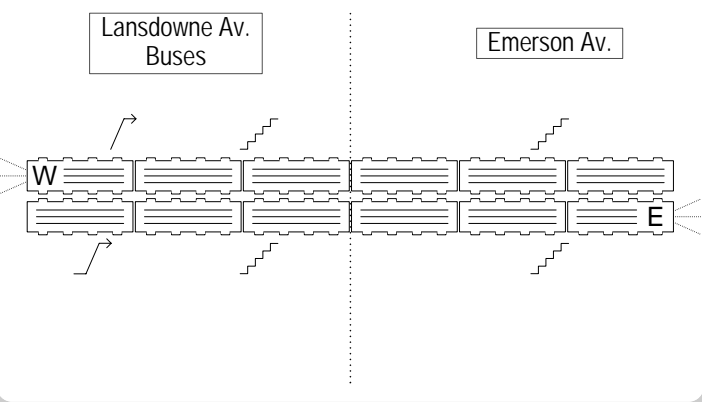
### King



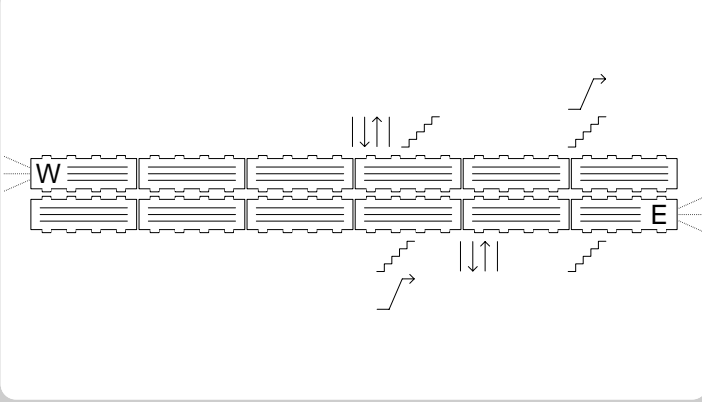
### Midland



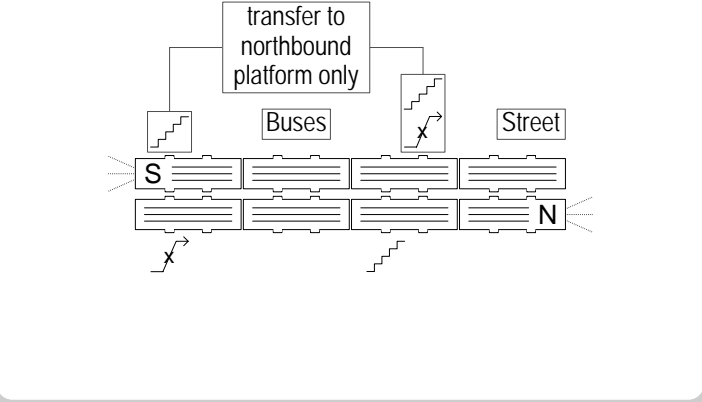
### Lansdowne



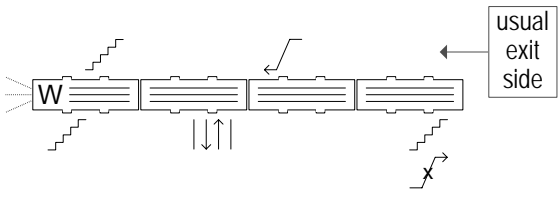
### Main Street



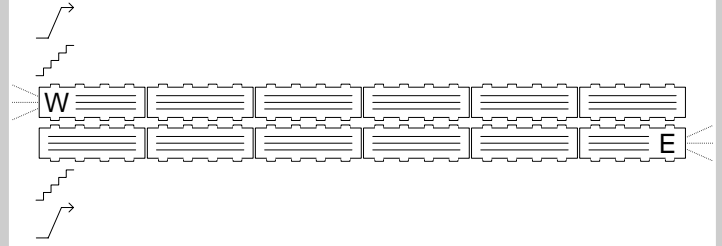
### Lawrence East



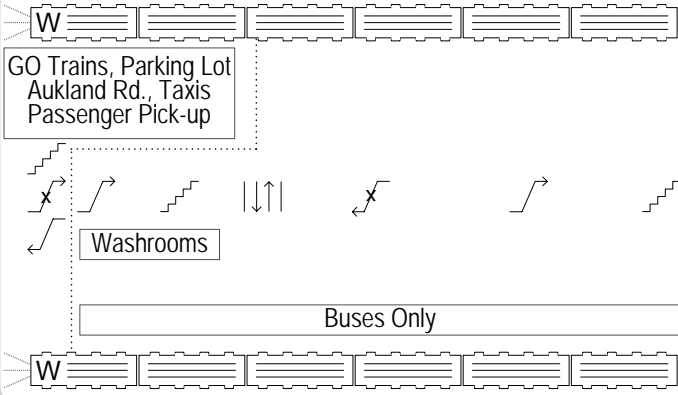
## Kennedy (RT)



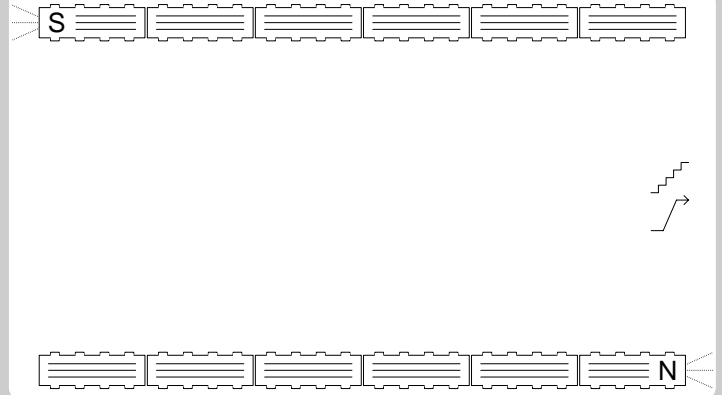
## Old Mill



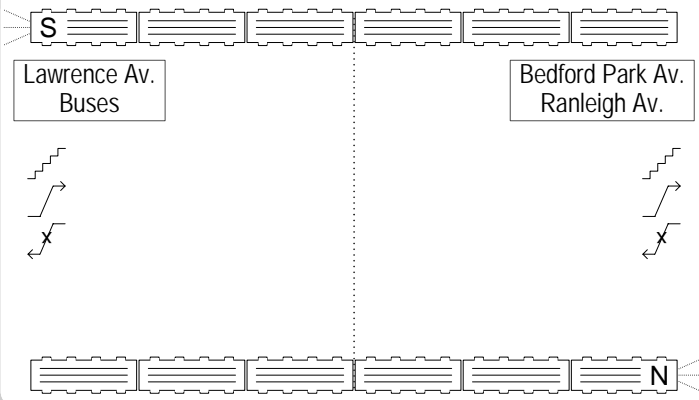
## Kipling



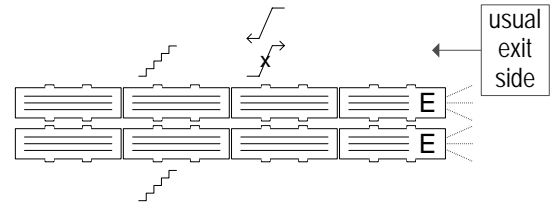
## Museum



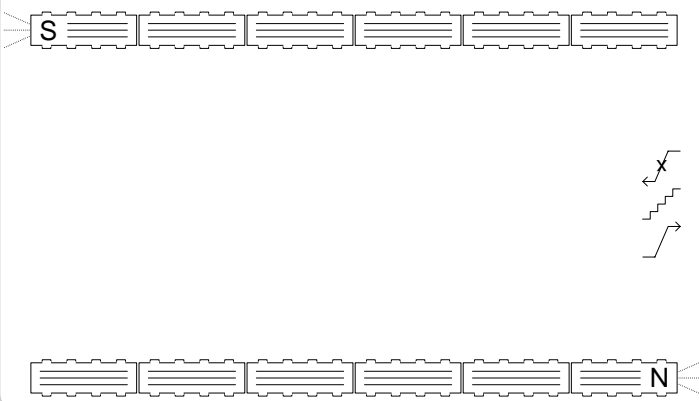
## Lawrence



## McCowan



## Lawrence West



## Leslie

